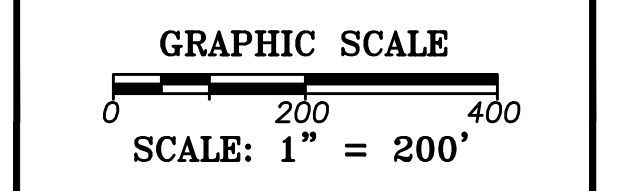


PREPARED FOR:

PROJECT
 AIRPORT MASTER PLAN UPDATE
 AIP NO. 3-25-0015-23-2018

OWNER
 CHATHAM MUNICIPAL AIRPORT
 TOWN OF CHATHAM, MASSACHUSETTS

NO.	DATE	DESCRIPTION	BY
PROJECT NO.		777064	
DESIGNED BY		ID	
DRAWN BY		ID	
CHECKED BY		MPC	
DATE		APRIL, 2020	

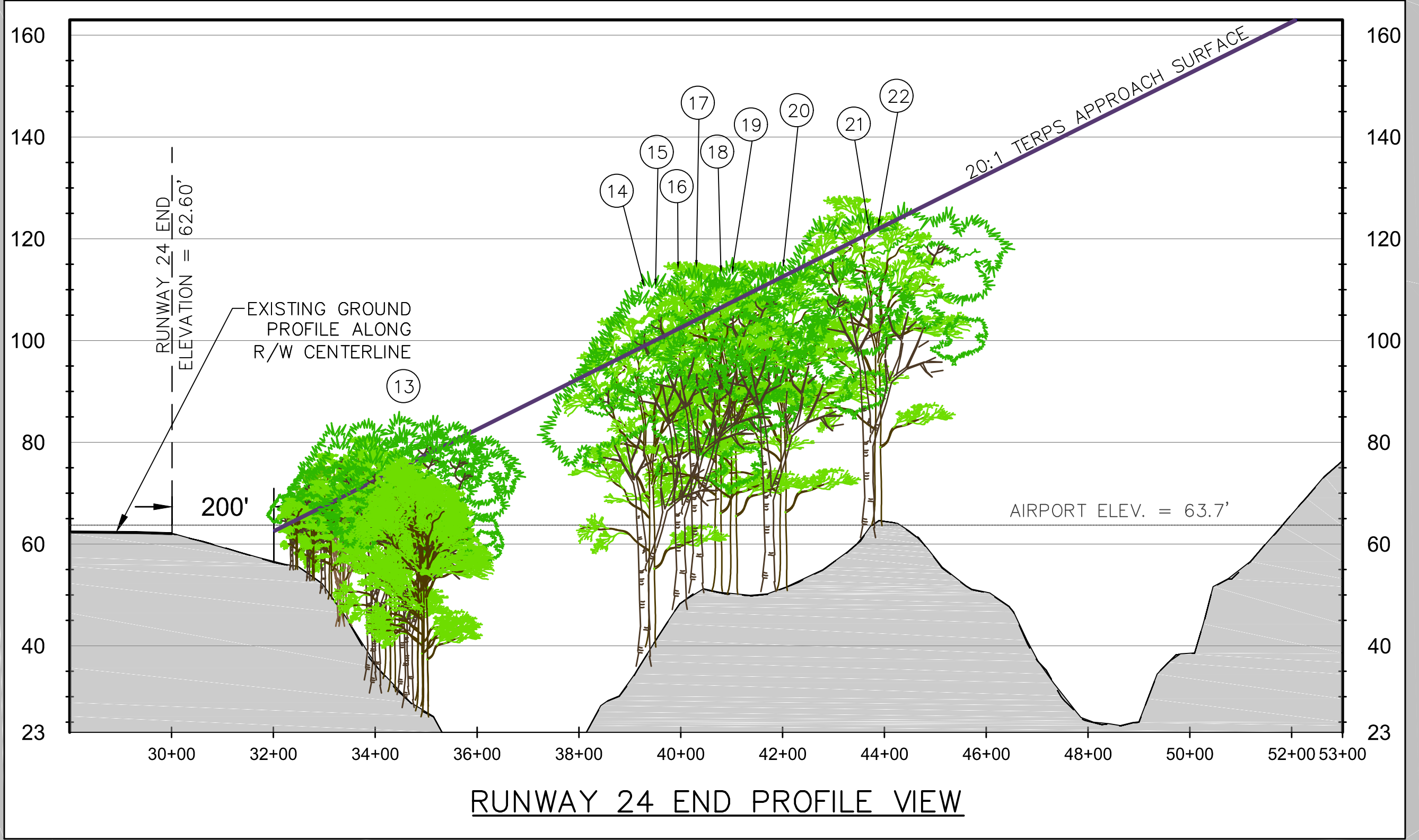
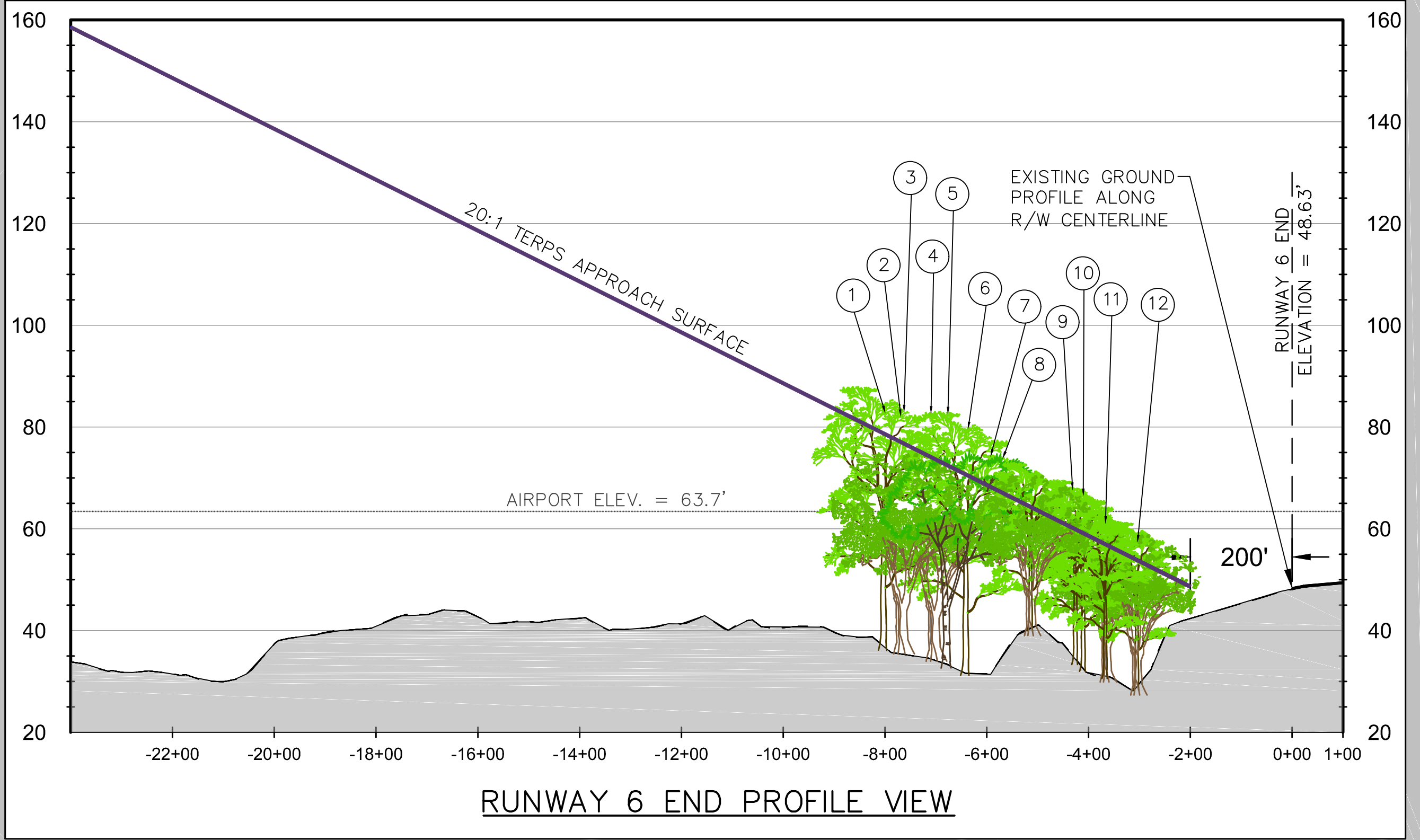
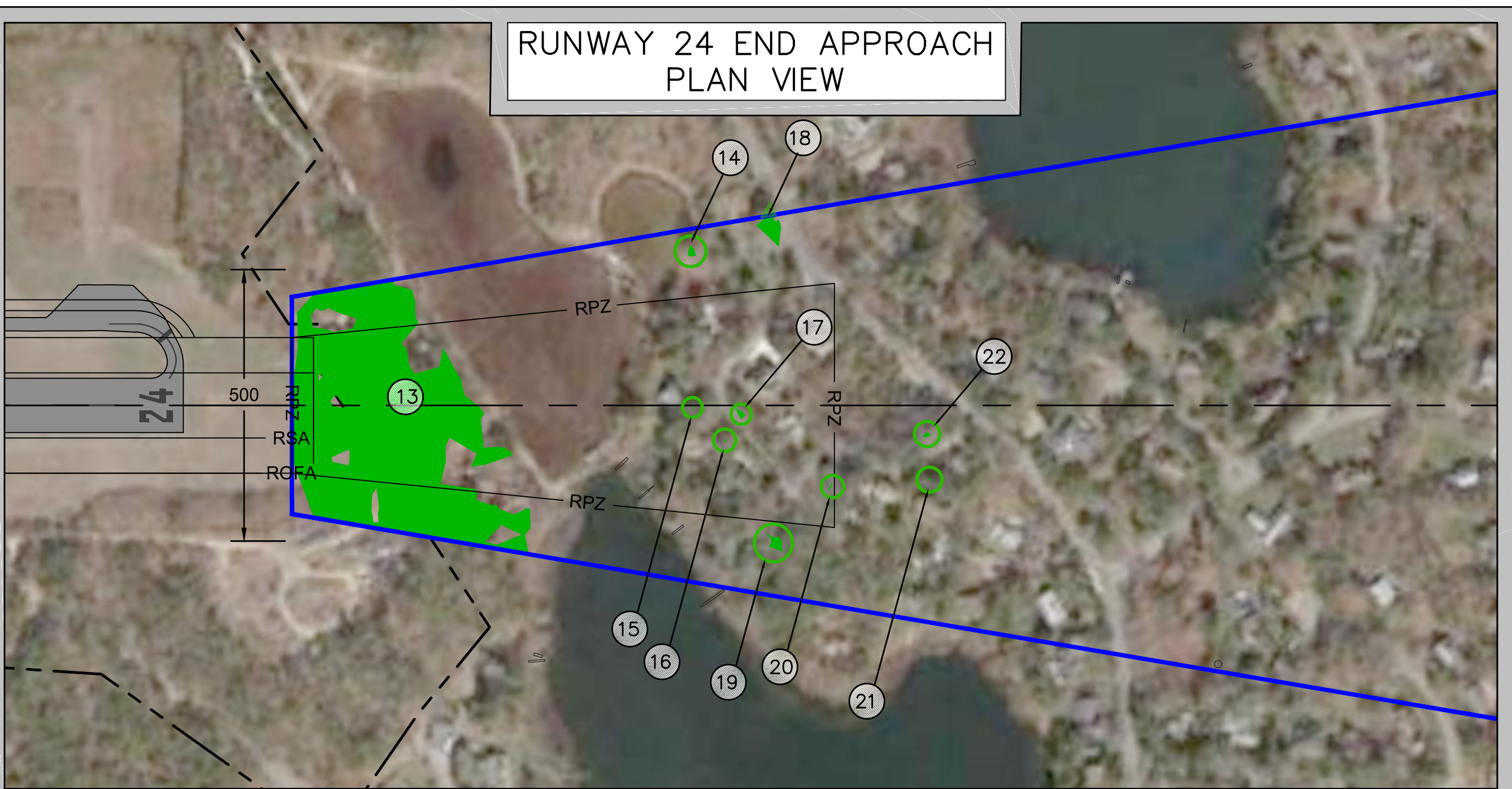
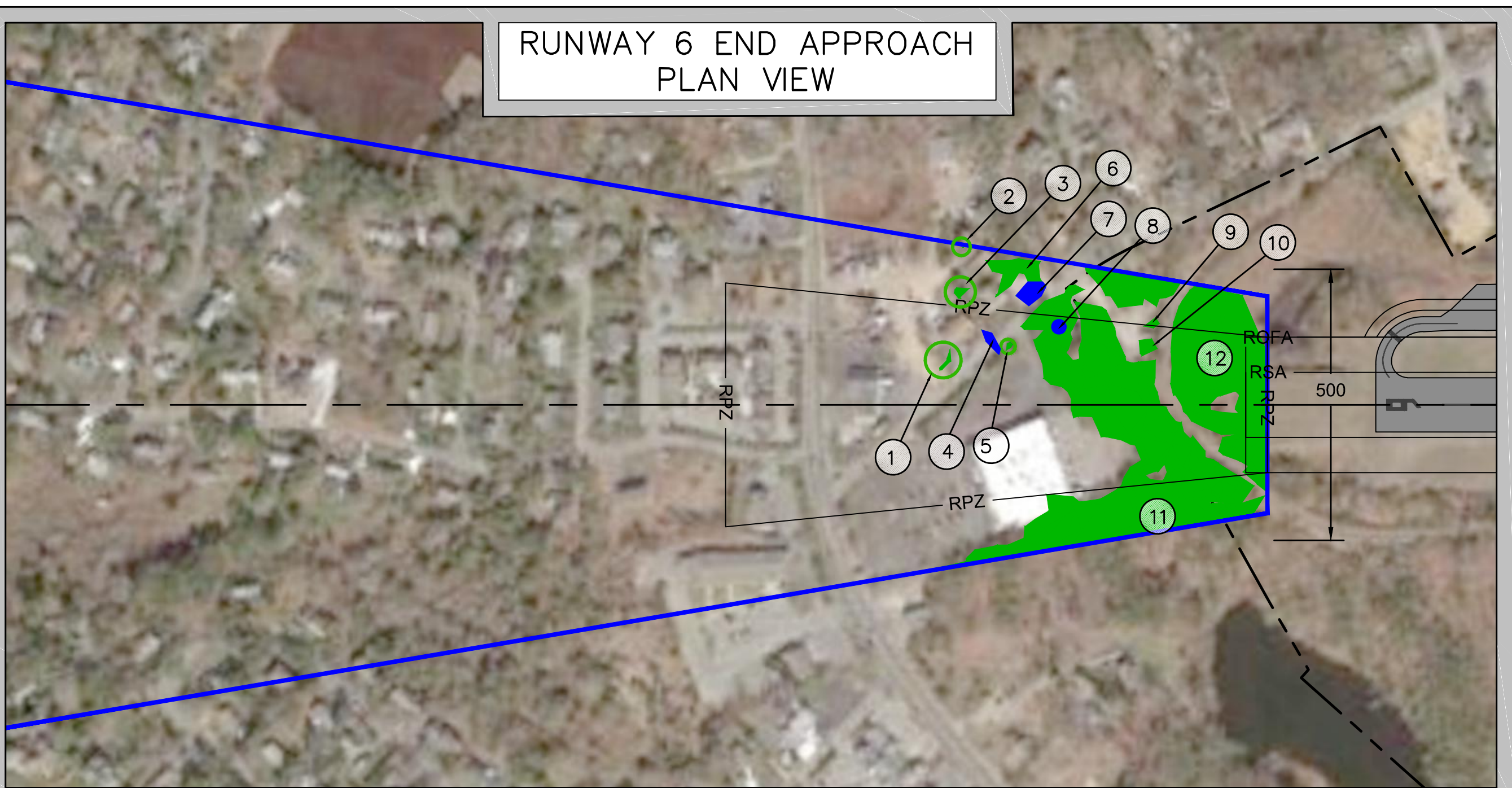


SHEET TITLE

TERPS APPROACH PLAN AND PROFILE
 RUNWAY 6-24

DRAWING NO.

7

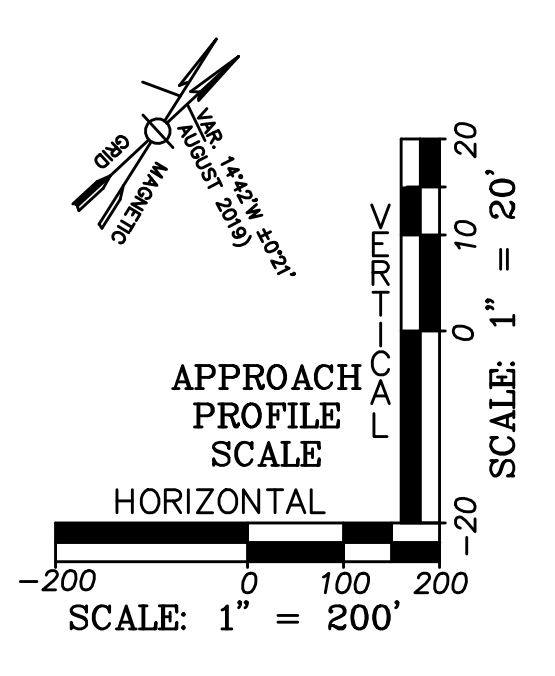


OBSTRUCTION DATA

OBJECT ID	DESCRIPTION	GROUND ELEVATION (FT. MSL)	PENETRATION (FT)	PROPOSED ACTION
1	GROUP OF TREES	39.89-40.33	1	REMOVE
2	TREE	36.45	10.33	REMOVE
3	TREE	38.22	7.27	REMOVE
4	POLE	42.96	0.5	LIGHT/LOWER
5	TREE	42.76	6.48	REMOVE
6	TREE	46.45	5.97	REMOVE
7	POLE	46.35	8.94	LIGHT/LOWER
8	CHIMNEY/ SMOKESTACK	47.12	3.25	LOWER
9	TREE	55.5	6.18	REMOVE
10	TREE	59.3	1.17	REMOVE
11	GROUP OF TREES	33.04-46.98	8.89-13.51	REMOVE
12	GROUP OF TREES	29.7-46.79	7.73-18.38	REMOVE

LEGEND

AIRPORT PROPERTY LINE	---
RUNWAY SAFETY AREA (RSA)	— RSA —
RUNWAY PROTECTION ZONE (RPZ)	— RPZ —
RUNWAY OBJECT FREE AREA (ROFA)	— ROFA —
RUNWAY OBJECT FREE ZONE (ROFZ)	— ROFZ —
20:1 TERPS APPROACH SURFACE	—
EXISTING PAVEMENT	█
VEGETATION PENETRATING TERPS SURFACES	█
STRUCTURE PENETRATING TERPS SURFACES	█



OBSTRUCTION DATA

OBJECT ID	DESCRIPTION	GROUND ELEVATION (FT. MSL)	PENETRATION (FT)	PROPOSED ACTION
13	GROUP OF TREES	50.59-64.25	1.36-28.42	REMOVE
14	TREE	18.56	0.50	REMOVE
15	TREE	38.81	1.00	REMOVE
16	TREE	45.75	1.00	REMOVE
17	TREE	49.87	2.00	REMOVE
18	TREE	43.23	9.01	REMOVE
19	TREE	40.27	2.44	REMOVE
20	TREE	55.6	1.00	REMOVE
21	TREE	55.33	0.50	REMOVE
22	TREE	62.70	1.50	REMOVE

4/2/2020 5:38:54 PM C:\Users\va\Desktop\777064\777064-COX AMP\ALP\Working Drawings\Final ALP\777064-COX-ALP-06- TERPS approach surfaces.dwg (10)