





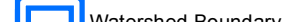
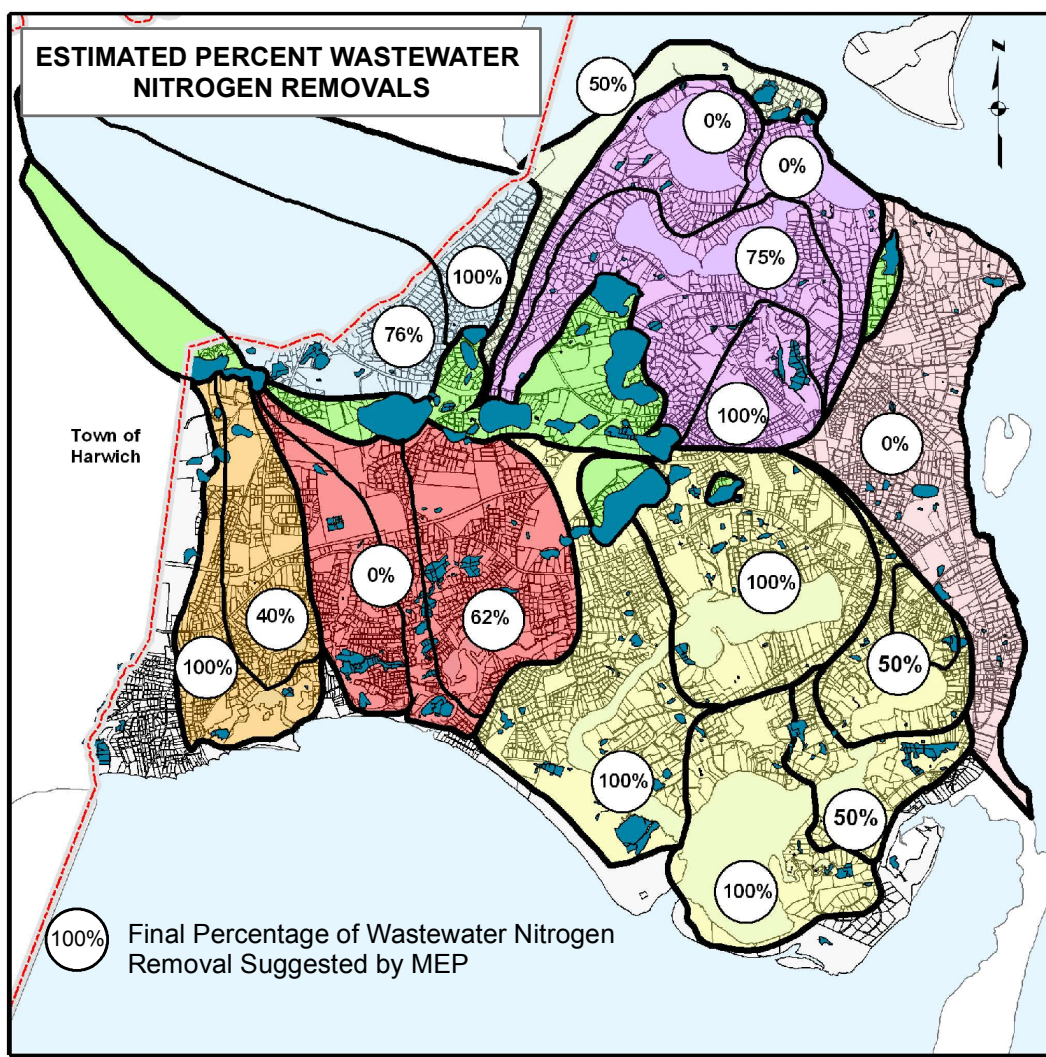
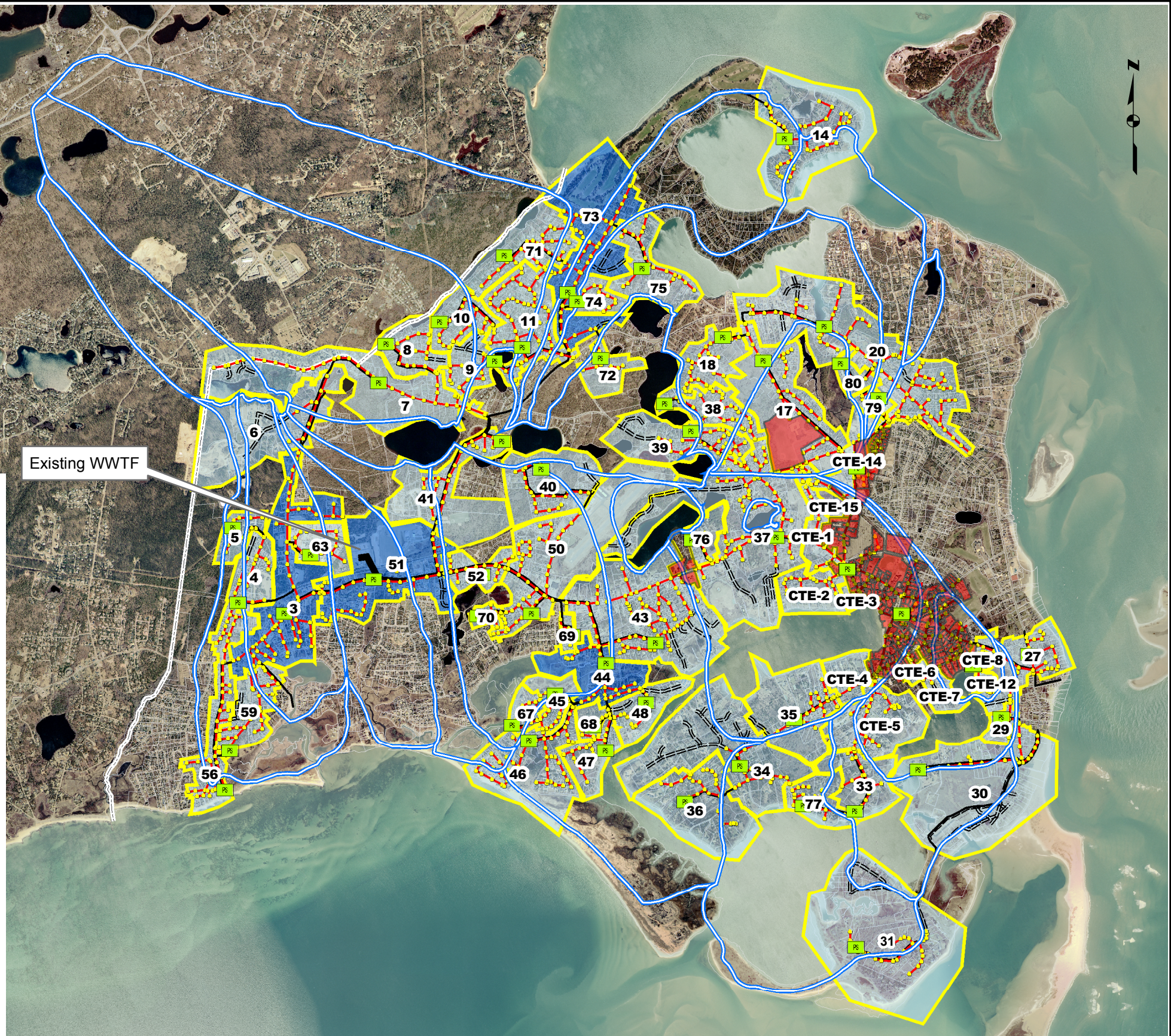


Legend

-  Proposed Pumping Station
-  Proposed Manhole
-  Proposed Gravity Sewer
-  Proposed Low Pressure Sewer
-  Proposed Force Main
-  Sewershed with ID#
-  Sewershed with Relay Pumping Station
-  Existing Sewered Area
-  Watershed Boundary



Existing WWTF



STEARNS & WHEELER^{LLC}
 Environmental Engineers & Scientists
 HYANNIS, MASSACHUSETTS
 1545 Iyannough Road
 Phone: 508 362-5680
 Fax: 508 362-5684
 Web: stearnswheeler.com

TOWN OF CHATHAM, MASSACHUSETTS
 COMPREHENSIVE WASTEWATER
 MANAGEMENT PLAN
 SEWERSHEDS TO MEET TMDL GOALS-
 ALTERNATIVE #3
 FIGURE 9-6